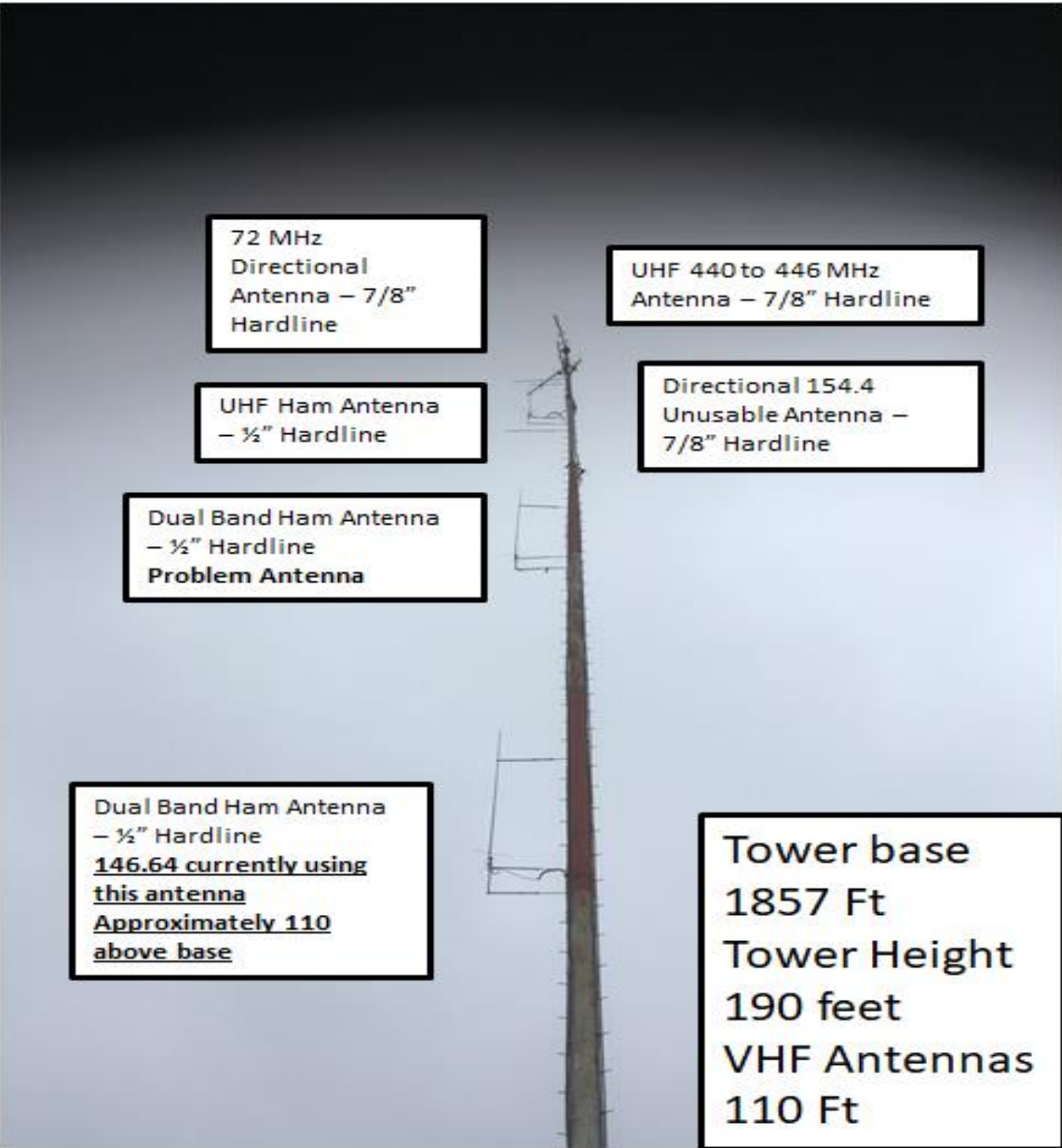


# Repeater Report

January 2019

# 145,19 Repeater





72 MHz  
Directional  
Antenna – 7/8”  
Hardline

UHF Ham Antenna  
– ½” Hardline

Dual Band Ham Antenna  
– ½” Hardline  
**Problem Antenna**

Dual Band Ham Antenna  
– ½” Hardline  
146.64 currently using  
this antenna  
Approximately 110  
above base

UHF 440 to 446 MHz  
Antenna – 7/8” Hardline

Directional 154.4  
Unusable Antenna –  
7/8” Hardline

Tower base  
1857 Ft  
Tower Height  
190 feet  
VHF Antennas  
110 Ft



## Series G7-136 136-144 Mhz Omnidirectional Fixed Station

## 2 Meter Antenna

- The G7-136 is tunable from 136-144 MHz
- Ideal for fixed or repeater applications.
- Low angle radiation for optimum signal.
- Constructed of high strength aluminum and fiberglass.
- Totally self-supporting design.

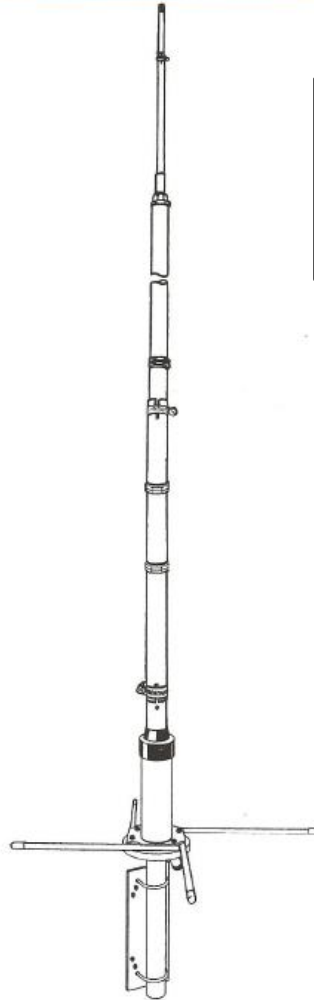
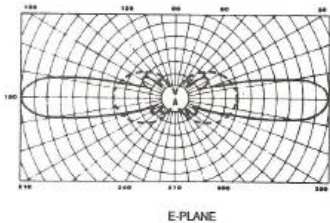
### SPECIFICATIONS

#### ELECTRICAL

|                      |                   |
|----------------------|-------------------|
| Maximum power input  | 1 Kw. FM          |
| Gain                 | 7 dBd             |
| VSWR                 | 6 MHz for 2:1     |
| Bandwidth            | 3 MHz under 1.5:1 |
| Impedance            | 50 ohms nominal   |
| Lightning protection | direct ground     |
| Termination          | Type N female     |

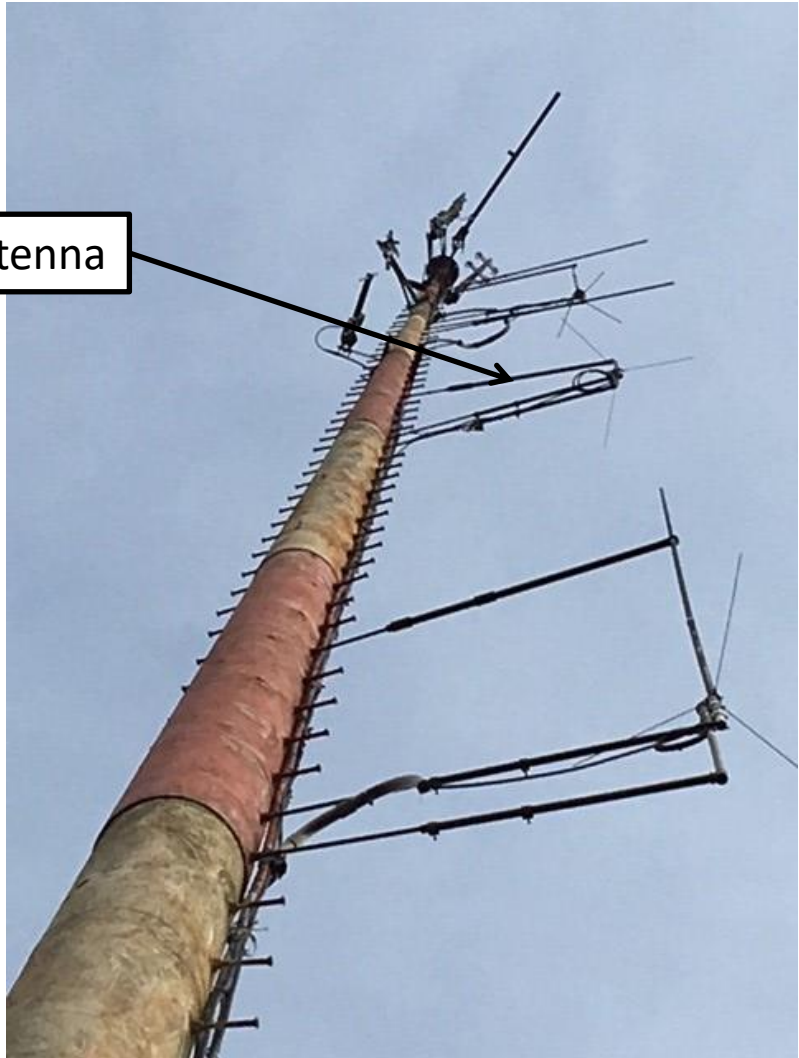
#### MECHANICAL

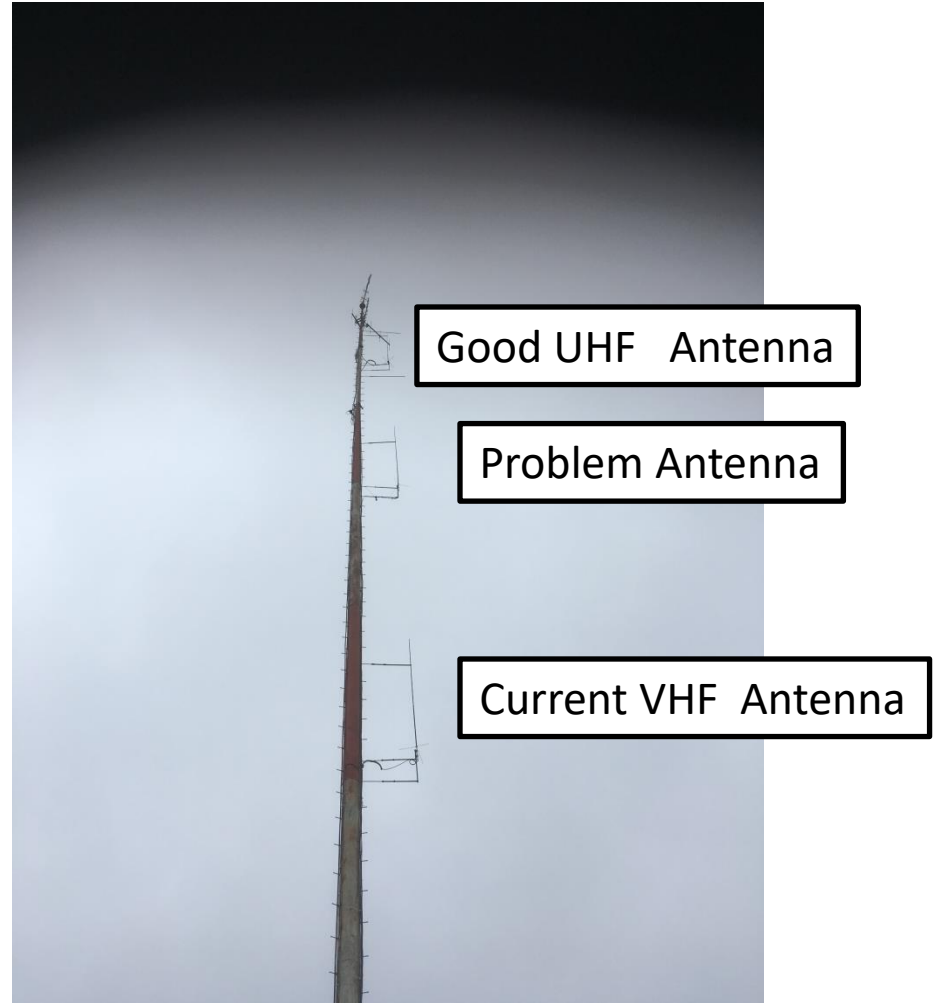
|                            |                      |
|----------------------------|----------------------|
| Length                     | 15 feet 4 inches     |
| Weight                     | 10 lbs               |
| Wind Survival              | 100 mph              |
| Equivalent flat plate area | 1.16 Ft <sup>2</sup> |
| Lateral thrust             | 46 lbs. at 100 mph   |
| Mounting                   | up to 2 inch mast    |



Appears was installed  
summer 2002

Problem Antenna





Good UHF Antenna

Problem Antenna

Current VHF Antenna

# View from ½ way up



# Misc antennas near top





# Top looking down questionable Antennas



- Status- DR-2X- remains on Tower road as 64 machine operating in AMS mode
- Due to high membership interest in digital access the second DR-2X will located at Tower road and put on UHF for digital modes ( Tower road appears to have functional UHF antennas mounted high on the tower). This would allow the 64 machine's primary focus on "talk" versus digital operation.
- We have internet at Tower road
- With the height of the UHF antenna on the tower coverage should be equal to the prior 64 coverage.
- UHF Frequency Pair has been requested
- Motorola base station being converted to a repeater will be located at Road and Bridge operating on 145.19 to provide coverage of local Boerne. This base station has a power output of over 100 watts making this a strong signal. The reason we may not want to have 145.19 machines at Tower road as the repeater's transmit frequency is at 144.49 – 100 KHZ away from our APRS receive frequency. This has the potential of "blocking" the APRS radio.